



Wish you were here?

Come and join @STSFTTrust



Our Trust - an introduction...

There has never been a better time to consider a career with us at South Tyneside and Sunderland NHS Foundation Trust. We are currently expanding our consultant and medical teams following the merger of City Hospitals Sunderland and South Tyneside NHS Foundation Trusts in April 2019.

We're looking for the very best consultants and trust doctors to join our exceptional teams and help us progress with our ambitious plans to transform healthcare across South Tyneside and Sunderland as part of our Path to Excellence vision to create an NHS which is fit for the future. We might be a new Trust, but we have a strong and proud history of working together to deliver the very best clinical care for patients in South Tyneside, Sunderland and beyond. As one of just three specialist centres in the region, we offer a range of highly specialist services including head and neck cancers, bariatrics, cardiology, urology, vascular, renal medicine, ophthalmology and ENT services, as well as many other acute specialties.

Our services span into parts of County Durham as well as further afield and we are currently leading work to create an 'integrated care partnership' across Durham, South Tyneside and Sunderland to collectively plan how we deliver more sustainable service models, across much bigger geographical populations, in the future.

We have a big, exciting future ahead and we want you to be part of it. So if you're looking for a new challenge and the opportunity to shape outstanding healthcare services for generations to come, South Tyneside and Sunderland NHS Foundation Trust might just be the place for you. For more information about our Trust and the excellent package of benefits and rewards we can offer you, read on...



Our Team - what medicine means to us...



Dr Shaz Wahid, Medical Director

We are committed to providing the very best care to our patients. Our team are our greatest ambassadors and passionate about the work we do with patients, carers and their families to provide individualised person-centred care and services based on personal choice and shared decision making. Above all else, patients, carers and their families are at the heart of everything we do.

We are committed to developing our consultant workforce and provide a range of opportunities for life-long professional development and career progression. As well as development within your sphere of clinical expertise, opportunities exist to develop regional, national and international portfolios in research, innovation, medical education and medical leadership. We also have excellent links with our local universities in both Sunderland and Newcastle and have helped pioneer the development of a brand new medical school at the University of Sunderland which welcomed its first medical student in September 2019.

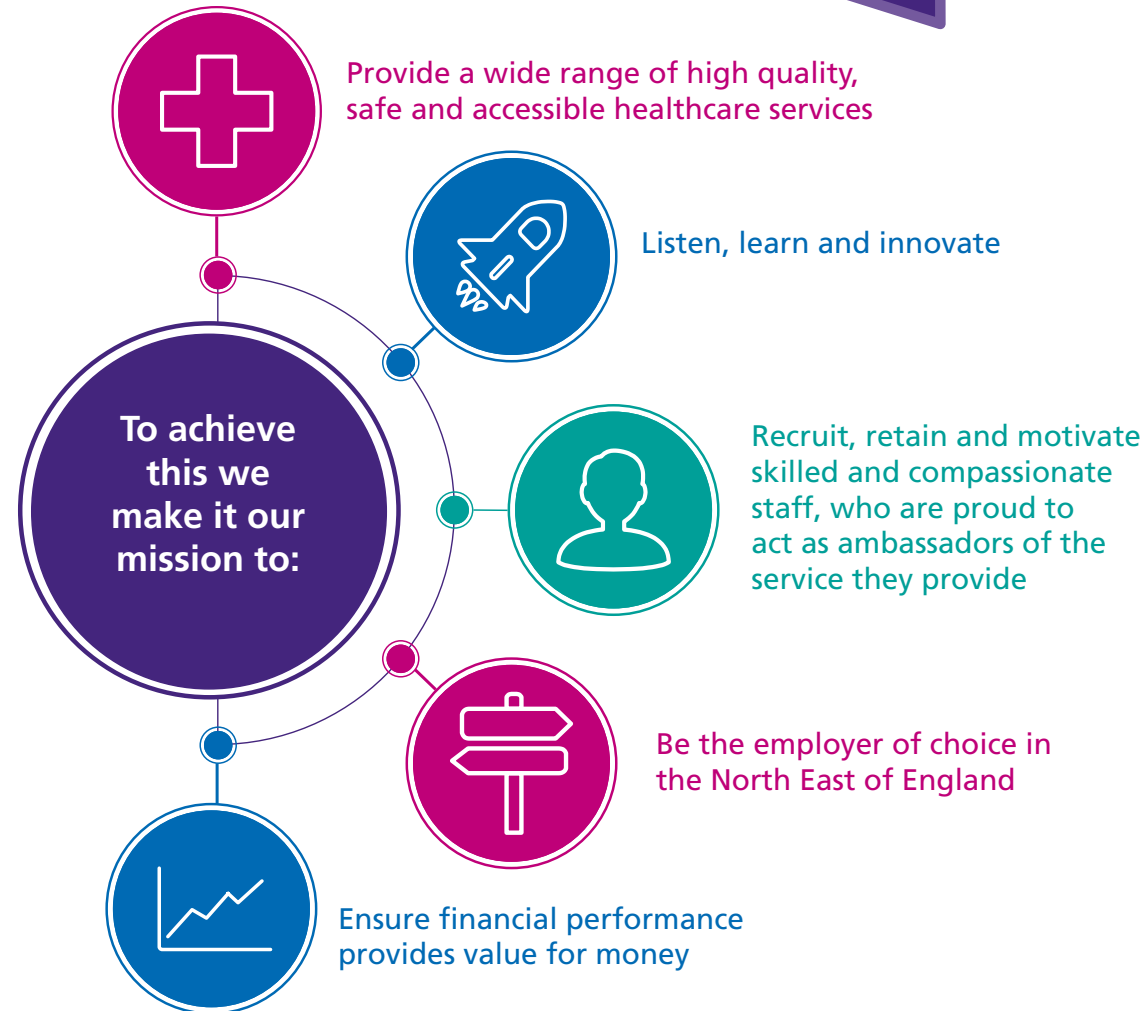
We are at the forefront of technological innovation in the NHS and recognised nationally as 'Global Digital Exemplar' sites having invested significantly into our IT infrastructure to improve clinical information sharing and work towards our ambition of becoming paper free at the point of care.

At South Tyneside and Sunderland NHS Foundation Trust we want you to flourish in your professional life and will give you the flexibility and support to take your career wherever you want it to go.





Our vision

To deliver nationally recognised, high quality, cost effective, sustainable healthcare for the people we serve, with staff who are proud to recommend our services.



Our values

 Compassionate and dignified, high quality, safe patient care always the first priority

 Working together for the benefit of our patients and their families or carers

 Openness and honesty in everything we do

 Respect and encouragement for our staff

 Continuous improvement through research and innovation



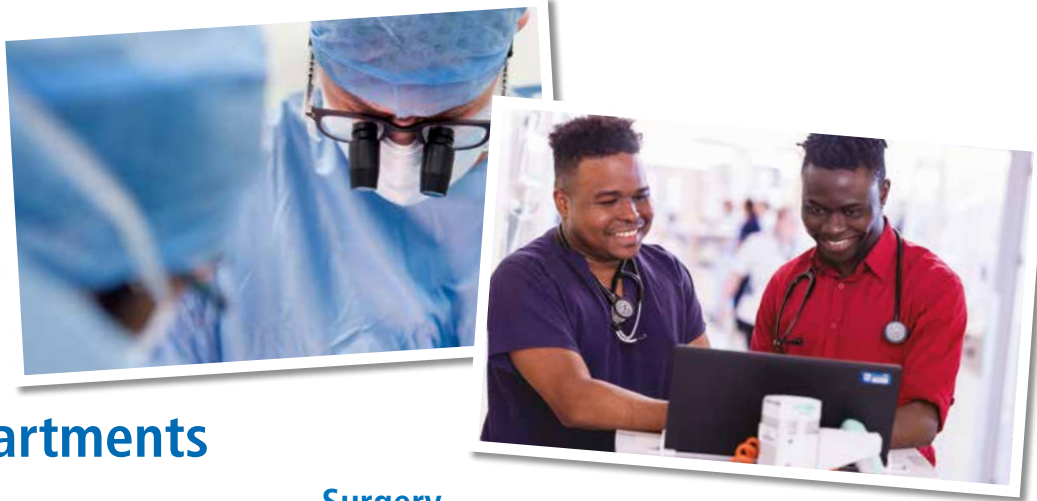
Our behavioural compact

<p>Compassionate</p> <p>To be compassionate:</p> <ul style="list-style-type: none"> • We put people first • We treat people as human beings • We take time to listen, empathise and provide support 	<p>In practice:</p> <ul style="list-style-type: none"> • Be kind • Be approachable • Control our emotions, frustrations and irritations • Stay calm • Hold private conversations in private
<p>Working together</p> <p>To work together:</p> <ul style="list-style-type: none"> • We work as a team • We value the work and views of others • We support each other and the Trust 	<p>In practice:</p> <ul style="list-style-type: none"> • Offer our help • Do what we say we will do • Co-operate and compromise • Engage and involve others and ask for ideas • Appreciate the importance of everyone's role • Prioritise our work
<p>Openness and honesty</p> <p>To be open and honest:</p> <ul style="list-style-type: none"> • We have open and honest conversations even when it's hard • We raise any concerns appropriately • We share information appropriately 	<p>In practice:</p> <ul style="list-style-type: none"> • Give honest constructive feedback • Speak up respectfully • Have appropriate self-belief and confidence • Be aware of our own strengths and limitations • Apologise where appropriate
<p>Respect and encouragement</p> <p>To respect and encourage:</p> <ul style="list-style-type: none"> • We show everyone respect and encouragement • We are well mannered • We are welcoming and friendly 	<p>In practice:</p> <ul style="list-style-type: none"> • Engage and involve others - seek their views • Introduce ourselves by name and role • Make eye contact and smile • Be punctual • Be grateful – say “please” and “thank you”
<p>Continuous improvement</p> <p>To continuously improve:</p> <ul style="list-style-type: none"> • We accept the need to change and continuously improve • We are open and responsive to new ideas • We never stop learning, discovering and improving 	<p>In practice:</p> <ul style="list-style-type: none"> • Seek and listen to feedback and change if required • Take responsibility for solving problems • Keep our own skills and knowledge up to date • Identify and learn from our successes and our mistakes • Be positive and enthusiastic

Our Trust at a glance...

We are one of three specialist centres in the north east of England providing a range of hospital and community services. We provide outstanding care for our patients in our three main hospital sites – Sunderland Royal Hospital, South Tyneside District Hospital and Sunderland Eye Infirmary as well as hundreds of community sites and home visits.

We employ over 8,000 highly committed and skilled NHS staff who are widely recognised for providing outstanding care and a compassionate service to our patients serving a core population of just under half a million people.



Our clinical departments

Medicine

- General internal medicine (including gastroenterology, diabetes and endocrinology and cardiothoracic medicine)
- Medical specialities (including renal, oncology, nephrology, haematology and rheumatology)
- Rehabilitation and older people's medicine (including stroke, dementia care and neurology)

Surgery

- General surgery (including bariatric, colorectal, upper GI and vascular surgery)
- Urology
- Head and neck surgery (including ear, nose and throat, oral and maxillofacial surgery and orthodontics)
- Ophthalmology
- Trauma and orthopaedics

Urgent and Emergency Care

- Urgent and Emergency Care
- Emergency medicine (including adult and paediatric emergency departments, integrated assessment units and ambulatory care)

Perioperative and Critical Care

- ICCU (including Outreach and RACI)
- Operating theatres
- Day of Surgery Admissions Unit
- Endoscopy
- PREP
- Anaesthetics
- Clinical Health Psychology
- Sterile Services Department
- Pain Management Services (Acute and Chronic)

Clinical Support

- Therapy services (including physiotherapy, occupational therapy, speech and language therapy, podiatry and dietetics)
- Pharmacy
- Diagnostic imaging (including radiology, medical physics and medical photography)
- Outpatients

Family Care

- Obstetrics and gynaecology (including maternity services and genitourinary medicine)
- Paediatrics and child health (including three dedicated paediatric wards and theatres, separate paediatric emergency department and two children's centres)

Community Services

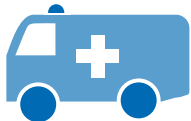
- Integrated teams (including district nursing, community matrons, occupational therapists and physiotherapists)
- 0-19 years (including health visitors, school nurses and specialist nurses)
- Mental health and learning disability (including improving access to psychological therapies (IAPT) and community learning disability teams)
- Specialist palliative care (including acute and community palliative care, nurse specialists and in-patient hospice care)
- Sexual health services
- Community dermatology and dentistry
- Recovery at home

Our facts and figures...

Find out more about our Trust, including the communities we serve, our staff numbers and an overview of where we are based.



Our turnover
£550m



Emergency attendances
each year
225,000



Diagnostic tests carried
out each year
17,000



Over 90% of staff feel
'their role makes a
difference to patients'



Serves a population of
427,000



Beds
1,300



Staff employed
8,000



Medical staff
359 Consultants
640 Doctors



Our locations...

1. South Tyneside District Hospital

2. Haven Court, South Tyneside

3. Palmer Community Hospital (Jarrow)

4. Clarendon (Jarrow)

5. Elmville Unit, Monkton Hall (Jarrow)
6. Sunderland Royal Hospital

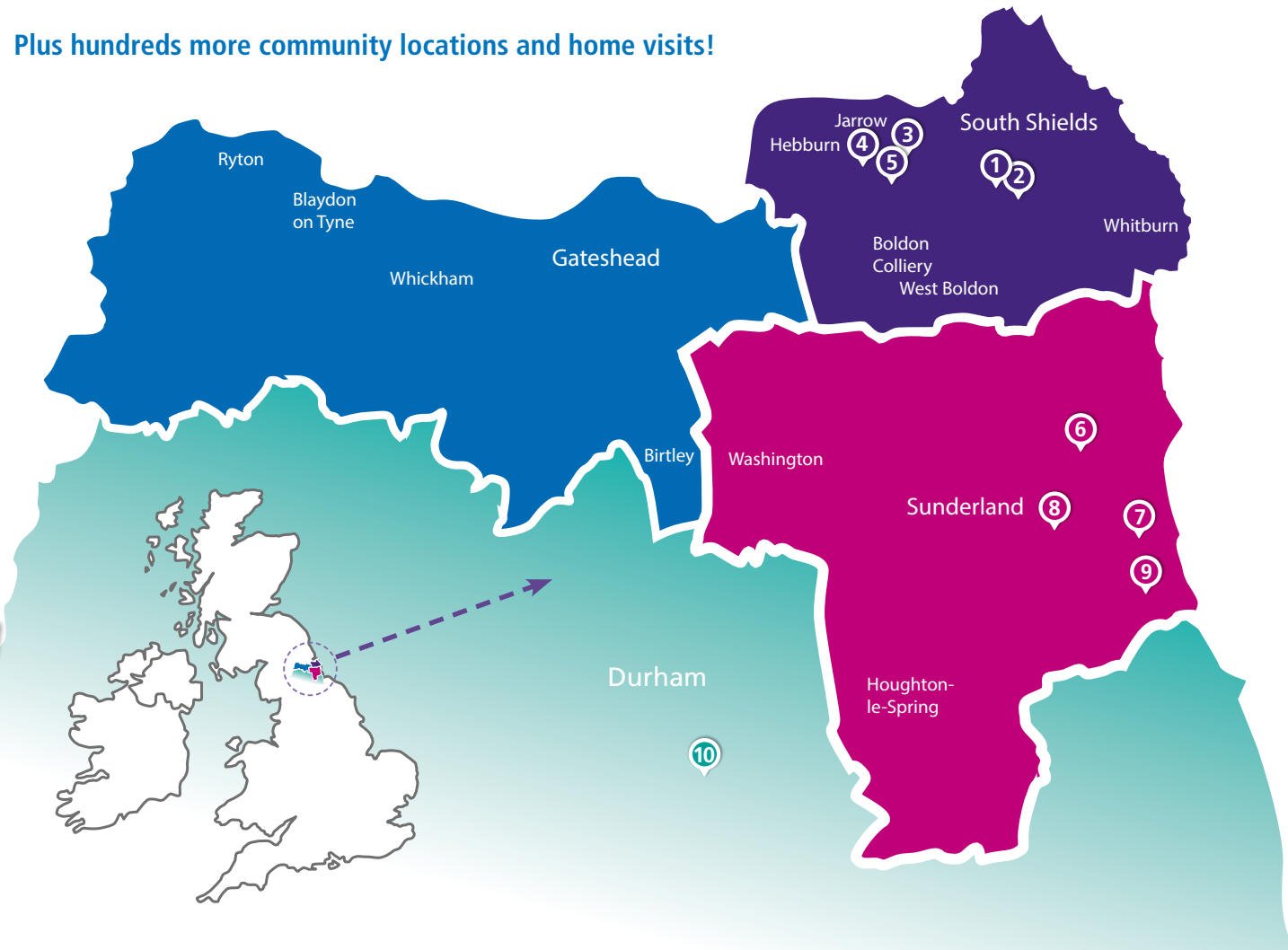
7. Sunderland Eye Infirmary

8. Sunderland Children's Centre

9. St Benedict's Hospice (Ryhope)

10. Durham Treatment Centre

Plus hundreds more community locations and home visits!





Our Trust - recent developments...

We are passionate about delivering excellent patient care and innovation is at the heart of everything we do. You can expect nothing less at South Tyneside and Sunderland NHS Foundation Trust. Here are some of our most recent new developments:

- State-of-the-art Critical Care Unit
- Chemotherapy / infusion treatment unit
- Dedicated urology and renal treatment centres
- Second cardiac catheterisation lab
- World-class adult and children's emergency departments – the first to be paper free at the point of care
- Upgraded endoscopy unit and development of central scope cleaning department
- 3D Da Vinci robot used in a range of specialities
- Development of a new endovascular theatre – the first phase of our new specialist vascular unit
- £5.4 million Durham Treatment Centre
- Multi-disciplinary Sunderland recovery at home service, offering nursing visits, therapy and treatment 24/7
- Investment of more than £200,000 in cutting edge ultrasound technology
- £9million Haven Court – a centre for excellence in integrated health and social care for older patients
- £1.4million surgical centre at South Tyneside District Hospital
- One of 17 Trusts nationally to be awarded Global Digital Exemplar status helping to lead the digital transformation of the NHS

Our Team - developing you...

Working with us is both challenging and rewarding. We frequently get complimented on our friendly and compassionate approach and outstanding levels of care.

Our clinicians are committed to delivering first-class care to all patients and are supported by an outstanding team of nurses, allied health professionals and operational management support. We encourage learning and continuous improvement for all of our staff, so as well as developing your own career at STSFT you will have the opportunity to share your skills and best practice with colleagues across a range of specialities and our doctors in training.

In addition, we can offer you a competitive package of rewards and benefits, including:

Flexible PAs

– Whether you have a special interest, a passion for research and innovation or want to maintain a better work-life balance, we can work with you to develop a career path that's right for you.



Personal development budget

– You'll have the power to develop your own career and explore your own development needs. As well as access to a programme of in-house training and development, our senior clinicians attend courses and conferences as well as shaping their clinical areas through representation on a range of prestigious groups and boards.

Rotation

– We have a number of medical specialities and work across three main hospital sites as well as a number of community venues. We can offer you an interesting and varied working life with the opportunity to be exposed to additional sub-specialities.

Strong leadership

– We have a strong clinical leadership structure. Our medical director sits on our executive board and we have clinical directors across all of our speciality areas. Our clinical and directorate management teams work closely together to ensure that we make decisions that are right for our patients and support outstanding patient care.

Opportunities to shape and develop others

We are all about supporting and developing our next generation of doctors and this is where our senior clinicians make a huge impact. We have close links with our local universities in Sunderland and Newcastle and have supported the opening of a new medical school at the University of Sunderland, which achieved a full cohort of 50 students in its first year and will look to expand to 100 in its second. Our junior doctors rank their training experiences amongst the very best in England.

According to the results of the 2018 GMC annual survey our foundation doctors in training are some of the most satisfied across the whole of the North East region and, indeed, the country. We also performed extremely well in the GMC's annual 'trainer' survey, being one of only a handful nationally to achieve a green flag for overall performance.

“Our junior doctors rank their training experiences amongst the very best in England.”

#OurTeamOurTrust
@STSFTTrust

The coast and country life

– We have miles of stunning beaches and beautiful countryside right on our doorstep. The North East is packed with history and heritage, but you are always close to bustling city centres and a diverse range of shops, bars and restaurants. We are lucky to have some of the most affordable house prices in the country with the average price for a detached house priced at £284,311*. We also have a number of outstanding schools, colleges and universities. If you are considering relocating, talk to us about the packages available to support you.

*Figures for Tyne and Wear 2018/19 by Rightmove.com



Join us on the Path to Excellence

The Path to Excellence is five-year healthcare transformation programme across South Tyneside and Sunderland which has been set up to secure the future of local NHS services and to identify new and innovative ways of delivering high quality, joined-up, sustainable care that will benefit the population both now and in the future.

We want to build outstanding future hospital services which offer the very highest quality of patient care and clinical excellence for all residents in South Tyneside and Sunderland and our clinical teams are key to helping us achieve this. There are two phases to the Path to Excellence programme. Following significant consultation and scrutiny, phase one changes have been implemented. We are in the process of modelling ideas for phase two with our clinical teams so it is a great opportunity for you to get involved in this significant transformation programme and help us shape local healthcare services going forward.

Phase one

- Stroke care services
- Maternity (obstetrics) and women’s healthcare (gynaecology) services
- Children and young people’s healthcare (urgent and emergency paediatrics) services

Phase two

- Acute medicine and emergency care
- Emergency surgery
- Planned care including surgery and outpatient care



What we have achieved so far...



new maternity service



Introduced a new maternity service across South Tyneside and Sunderland with the creation of a new midwifery-led birthing centre at South Tyneside District Hospital to sit alongside our consultant-led unit and specialist neonatal care at Sunderland Royal Hospital.

STROKE CARE

Centralising all acute inpatient stroke care at Sunderland Royal Hospital has resulted in major improvements in clinical outcomes for patients.

	Before change	After change
Patients scanned within 1 hour	South Tyneside 22%	70%
	Sunderland 41%	
Eligible patients given thrombolysis (clot busting drugs)	South Tyneside 9%	85%
	Sunderland 63%	
Average time to be assessed by a consultant stroke specialist	South Tyneside 13hrs	5 hrs 47 mins
	Sunderland 8hrs	



More aligned working between our emergency paediatric and obstetrics and gynaecology consultant teams has helped us provide more equal and sustainable access to care 24 hours a day, seven days a week.

Research and innovation

We have a dedicated research and innovation team which works alongside colleagues across the Trust to help us create a positive culture for research and innovation and encourage our staff to have a voice and bring forward their ideas.

We understand the importance of being research active and creating opportunities for our clinical teams to think outside the box to improve patient care and outcomes. Our dedicated team manages the review, set up and delivery of research projects across the Trust. We deliver projects across a range of clinical areas from clinical trials of new drugs or interventions, to major international studies into health and disease.



We have active research trials in a number of speciality areas, including:

- Bariatrics
- Cardiology
- Critical Care and Anaesthetics
- Diabetes
- Gastroenterology
- Hepatology
- Oncology
- Ophthalmology
- Orthopaedics
- Paediatrics

- Renal
- Repro Health
- Respiratory
- Rheumatology
- Stroke
- Surgery

We support bright ideas, from simple changes to an existing product, to a radical new invention and work with a range of organisations to help you develop and protect your ideas from conception to creation.



Some of our successes so far...

All about me boards

Reusable whiteboard templates that were developed by our acute stroke team to encourage compassionate care. Families fill in the relevant sections and can add personalised information, photos etc to help staff get to know the patient and tailor care to meet their needs. This simple idea has dramatically improved the experience of patients and their families in our care and has been adopted by other trust departments and other NHS Trusts and hospices nationally.

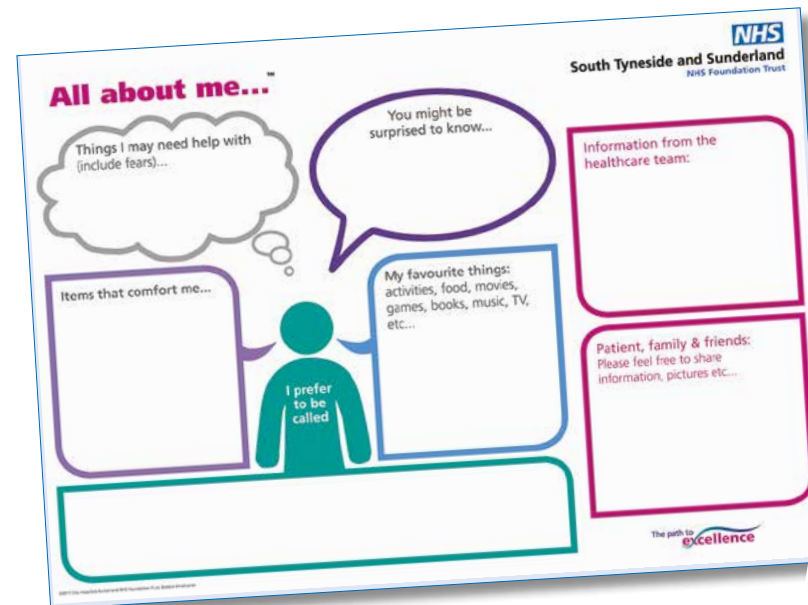
ENDOCUFF VISION® device

The device has been used in a number of pioneering clinical trials and has improved adenoma detection rate (ADR) in patients attending bowel cancer screening, compared with a standard colonoscopy. The ENDOCUFF VISION® device was produced in a collaboration between our gastroenterology team and Arc Medical and has increased cancer detection by 1.8%. It was fast tracked through the NHS England Innovation and Technology Payment (ITP) programme and has won several prestigious awards.

The Tookie Vest

The renal team, in collaboration with MedConnect North worked with patient groups to come up with a new vest for renal patients to secure venous line catheters in place for haemodialysis. The collaboration was shortlisted in the 2017 Bright Ideas in Health Awards Collaboration with Industry category and Tookie Limited won first prize in the Medilink Northern Powerhouse Healthcare Business Awards in the Innovator category 2018.

The Tookie Vest for Renal is now available for NHS organisations to purchase through the NHS supply chain, with royalty shares coming back to the Trust to re-invest in patient care.



ADXBLADDER test

The simple urine test was developed by Arquer Diagnostics in collaboration with one of our Consultant Urologists. The Trust led a large multi-centre clinical trial with patients attending special clinics for blood in the urine. Patients underwent ADXBLADDER testing and had their results compared to the gold standard approach of cystoscopy, ultrasound and CT scanning. The test correctly identified 95% of patients with high risk cancers. The collaboration won first place in the 2017 Bright Ideas in Health Awards Collaboration with Industry category.

Arquer Diagnostics secured additional funding to continue to develop the urine test and has created two jobs for the region.



Our Trust - a career on the coast...

The North East of England is one of the most beautiful and varied landscapes in the UK with city, coast and countryside all on your doorstep.

South Tyneside

Famed for its stunning coastline, with beautiful bays and soaring cliffs, the seaside town of South Shields has welcomed more than 1 million people across the finish line of the world's biggest half-marathon – the Great North Run, since 1981. There's a year-round event programme in the area for all ages.

A firm favourite is the summer festival, with a spectacular parade, family fun days and live music, including free open air concerts featuring some of the world's top names. You can discover the local rich heritage at fabulous attractions such as South Shields Museum, Souter Lighthouse, Jarrow Hall and Arbeia Roman Fort. Newer attractions include The Word – National Centre for the Written Word which has been a big hit with locals and visitors alike.

If you enjoy good food, the area has a range of eateries from fine dining, independent bistros, cosy village and riverside retreats, to award winning fish and chip restaurants and ice cream parlours. Our famous Ocean Road is also home to some of the finest Indian cuisine you will ever sample and is definitely not to be missed!

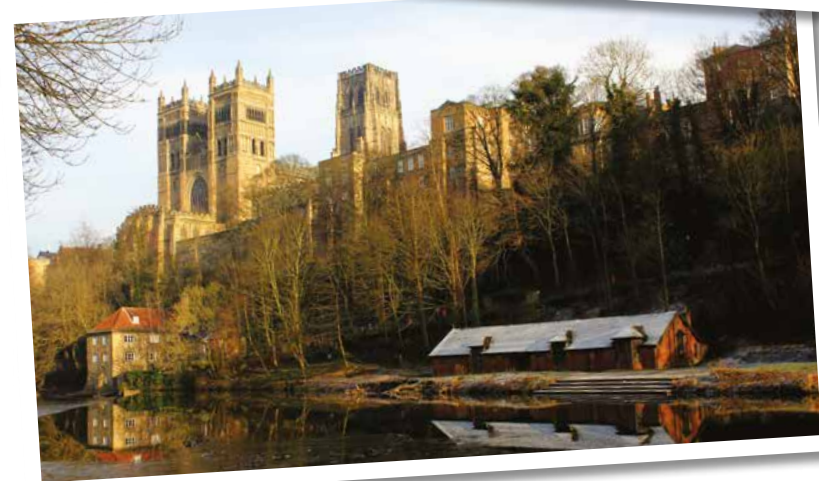
Sunderland

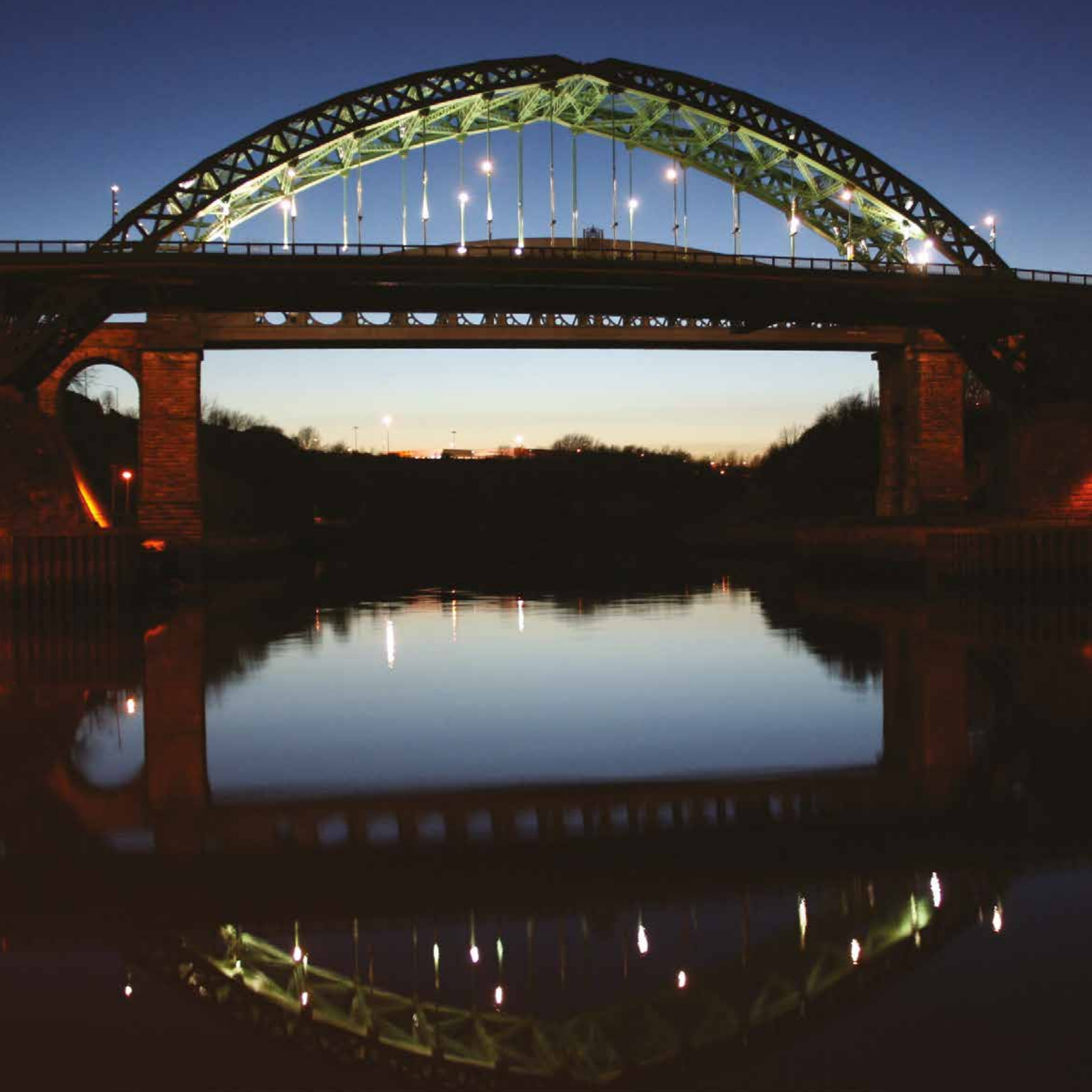
A welcoming and bustling city set on the coast and at the mouth of the River Wear. If you are looking for culture, the Sunderland Empire Theatre, National Glass Centre and Sunderland Museum and Winter Gardens are a must. The local underground music scene is also considered as one of the most vibrant in the UK. Sunderland benefits from stunning coastal scenery, acres of green spaces and a fantastic selection of shops, bars and restaurants suitable for all tastes and budgets.

The city is passionate about its sport. Sunderland A.F.C plays top flight football from its based at the Stadium of Light, the sixth biggest football ground in England. The stadium also attracts a host of major gigs, from the Spice Girls and Coldplay to Bruce Springsteen. Sunderland has some fantastic parks and green spaces and its outstanding coastline along Roker, Seaburn, Whitburn and Seaham is attracting major investment and regeneration with new restaurants, bars and attractions popping up all the time.

The North East

South Tyneside and Sunderland are ideal bases to explore the wider region. Within a 20 mile radius you can visit some of the best heritage and cultural attractions in the UK, including the historic city of Durham with its 900 year old cathedral and castle which has been named as a world heritage site and the cosmopolitan city of Newcastle which regularly tops the world's 'best cities to visit' lists. If shopping is your thing, there is also the Metrocentre in Gateshead – one of the largest shopping centres in Europe. If the countryside appeals to you, we have spectacular coastal and country landscapes in Northumberland, including Hadrian's Wall, Alnwick Castle and Gardens and Bamburgh Castle as well as the Lake District National Park all within easy reach.





Our Trust - Living it up...

The North East is a great place to live. House prices and the cost of living is certainly lower than in the south and we have the added benefits of not having to choose between city, coast and country – you can have it all here.

South Tyneside and Sunderland have an abundance of great schools to choose from and some lovely residential areas from Ashbrooke, High Barnes and Seaburn in Sunderland to Cleadon, East Boldon and Westoe Village in South Tyneside.

Further afield, there are lots of great places to live within easy commute of the Trust. Durham city centre has a lot to offer or you can find some beautiful villages like Wynyard on the outskirts. Gosforth and Jesmond are prime locations in Newcastle and of course the Northumberland countryside has a vast array of properties to suit all budgets.

According to the House Price Index for March 2019 (Gov.uk), the average house in the North East costs £123,046 compared to £463,283 in London meaning you can get a lot more for less in the region.



Our Team - what our Consultants say

Phil O'Donnell, Consultant in Emergency Medicine

Phil, originally from East Yorkshire, is one of our Consultants in Emergency Medicine and is based within the Emergency Department at Sunderland Royal Hospital. He joined the Trust in 2014 on a two-year placement in pre-emergency hospital training and emergency medicine before returning as a locum Consultant in 2018 and then securing a substantive Consultant post.

What drew you back to the Trust?

Throughout my training my interest was in emergency care and trauma and as the third centre in the region, there was plenty of scope to develop my skills and experience. I am lucky to have very supportive colleagues who have really helped me get to grips with a consultant career – this is particularly important for me now I have a young family and have more of a need to maintain a healthy work-life balance.



Do you have any special interests?

Some of my training was with the Great North Air Ambulance (GNAAS) and I was keen to keep a role in pre-hospital emergency medicine. I now work as part of the GNAAS medical team a couple of shifts a month and am supported by my clinical director, who is also a GNAAS doctor. Aside from this, I'm also involved with the Northumberland National Park Mountain Rescue Team and am the Regional Youth Manager for St John Ambulance.

“Being a specialist in emergency medicine is, to me, what being a doctor is all about. Knowing what needs to be done if someone is seriously ill in front of you, whatever that condition may be.”

Phil O'Donnell,
Consultant in
Emergency Medicine

Why should others choose STSFT?

STSFT is a large, forward thinking Trust that has big ambitions to improve services for the benefit of patient care. We have state-of-the-art facilities, such as our new Emergency Department at Sunderland Royal Hospital, which is completely paper free at the point of care. If you are looking for a supportive environment, STSFT is a great place for a career. I have always been made to feel at home both within my department and by colleagues in others areas of the Trust. You can have flexibility when you need it so you can develop special interests alongside your clinical commitments.

What's it like to live and work in the area?

It's great. We have good transport networks and so I am only 15 minutes from work. There is plenty to do in the region and we are close to Durham, Newcastle and Northumberland so there is plenty for us to do as a family.





We're going places, so could you...

OUR CONSULTANT TEAM IS EXPANDING

On 1 April 2019 our new Trust was born and there has never been a more exciting time to join us. As one of only three specialist centres in the North East, we are searching for exceptional people to join our growing consultant body and enjoy the outstanding lifestyle on offer in our beautiful region. We have a range of opportunities in a number of specialities for consultant and Trust Doctor posts and can offer flexible job roles to meet your own interests and personal commitments.

- Acute Medicine
- Anaesthetics
- Cardiology
- Emergency Care
- Neurology and Neurophysiology
- Paediatrics, Obstetrics and Gynaecology
- Radiology
- Respiratory / Thoracic
- Stroke and Care of the Elderly
- Trauma and Orthopaedics
- Urology

Our current vacancies can be found at www.stsft.nhs.uk/join-our-team
For an informal chat about working at our Trust contact Shaz Wahid,
Medical Director at Shahid.Wahid@chsft.nhs.uk or 0191 569 9157.

#OurTeamOurTrust

www.stsft.nhs.uk



www.facebook.com/STSFTTrust



[@STSFTTrust](https://twitter.com/STSFTTrust)



[@STSFTTrust](https://www.instagram.com/STSFTTrust)